



Optimizing Flooring and Social Management of Group Housed Gestating Sows

► Laurie Connor, University of Manitoba

The main objective is to determine the factors associated with flooring and social management of group-housed sows that promote sow well-being and the viability of pig production.

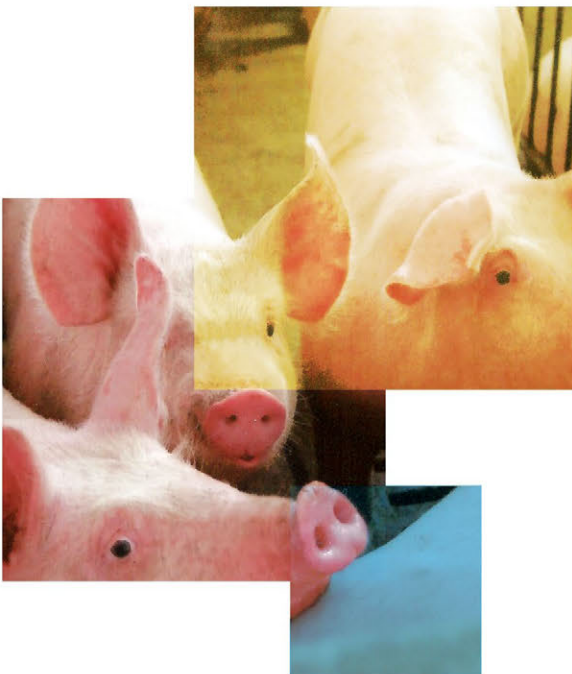
Summary

The immediate, as well as the long-term outlook for swine production means that producers will have to learn how best to manage group housing of sows.

To support them in this process, this project will determine the most effective slat and gap widths of flooring for sow group housing systems, taking into consideration both the comfort of the sow and ease of manure management.

Researchers will study the effect on reproductive performance and sow herd productivity and welfare of grouping sows at different times following weaning in three different housing and management systems. They will also calculate the production costs and benefits that accrue from grouping sows at weaning in the three management systems.

In addition, researchers will identify and develop suitable and sustainable environmental enrichment for sows housed on slatted floor systems.



Collaborators

Derek Brewin
Qiang Zhang

University
of Manitoba

Jennifer Brown
Yolande Seddon

Prairie
Swine Centre

Nicolas Devillers

Dairy and Swine Research
and Development Centre, AAFC